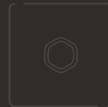
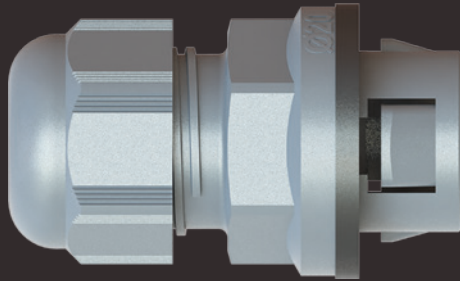


Euro-Top FrontFix

Discover our unique
quick-assembly cable gland!



Euro-Top FrontFix

Material	Polyamide 6 brass, nickelplated
Sealing	Chloroprene
Compression spring	Chloroprene



Temperatures	-20°C to +100°C short-term -30°C bis +150°C
Protection class	IP66/IP68
Note	Quick-assembly cable gland for installation in metric through-holes

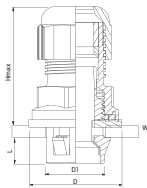


Article				Size	Clamping Range		Enclosure Wall Thickness (WT)	 1/2	L	D	Ø Bore	Hmax
Polyamide RAL 7035	Polyamide RAL 7001	Polyamide RAL 9005	Brass, nickelplated		≥	≤						
FRONTFIX1116	FRONTFIX1216	FRONTFIX1316	FRONTFIX6016*	M 16	5.0	10.0	0.5–4.0	22/22 20/20*	9.0	26.5 28.3*	16.2–16.4	42.5 45.0*
FRONTFIX1120	FRONTFIX1220	FRONTFIX1320	FRONTFIX6020*	M 20	6.0	12.0	0.5–4.0	24/24 22/22*	9.0	30.3 32.3*	20.2–20.4	41.5 44.0*
FRONTFIX1121	FRONTFIX1221	FRONTFIX1321		M 20	7.0	13.0	0.5–4.0	25/25	9.0	30.3	20.2–20.4	41.5
FRONTFIX1125	FRONTFIX1225	FRONTFIX1325	FRONTFIX6025*	M 25	11.0	17.0	0.5–4.0	29/29 27/27*	9.0	36.3 38.5*	25.2–25.4	43.5 46.0*
FRONTFIX1132	FRONTFIX1232	FRONTFIX1332	FRONTFIX6032*	M 32	15.0	21.0	0.5–4.0	36/36 34/34*	9.0	43.2 45.5*	32.2–32.4	49.5 54.0*
FRONTFIX1140	FRONTFIX1240	FRONTFIX1340	FRONTFIX6040*	M 40	19.0	28.0	0.5–4.0	46/46 43/43*	11.5 9.0*	55.2 58.0*	40.2–40.4	56.0 60.0*

The **Euro-Top FrontFix** is a unique and to date one-of-a-kind cable gland concept, which eliminates the need for traditional connection technology using threaded fittings or lock nuts. A special locking mechanism simplifies assembly considerably and means that time savings of approx. 70 percent can be achieved realistically compared with commercially available threaded cable glands. Also available with double seal for extended clamping range.

Applications:

- Automation
- Electrical engineering
- Solar and wind power
- Machinery and plant engineering
- Enclosure technology and switch cabinet construction



Advantages:

- A special spring element stabilises the cable gland directly after it is engaged in the through-hole and reliably prevents the cable gland from twisting during assembly. This is a crucial advantage especially in case of applications in confined spaces that are difficult to access.

- One-handed front mounting can be completed easily in under six seconds without the need for special tools.
- Euro-Top FrontFix** can be used flexibly with enclosure wall thicknesses of between 0.5 mm and 4.0 mm.
- Requirements for commercially available cable glands are fulfilled fully. This essentially relates to strain relief and the protection class (IP66, IP68).
- Euro-Top FrontFix** can be disassembled without difficulty and therefore also re-used repeatedly.
- Costs for complicated and time-consuming threaded holes or lock nuts do not arise.
- Cap nuts and connecting pieces each have clockwise threads. This offers an advantage over similar solutions, which generally have a counter-clockwise thread on the connecting piece and a clockwise thread on the cap nut.
- Cap nuts and connecting pieces have identical width across flats.
- Approval has been granted under the new EN 62444 (VDE 0619) standard and the incorporated impact test was also passed without difficulty.

Product inquiry

Would you like to receive further information, samples or a quote from us? Please send us the completed form by fax to » +49 5407 8766-99 or complete the form online at » www.frontfix.info.

	M 16	M 20	M 25	M 32	M 40
RAL 7035	<input type="checkbox"/>	<input type="checkbox"/>	<input type="checkbox"/>	<input type="checkbox"/>	<input type="checkbox"/>
RAL 7001	<input type="checkbox"/>	<input type="checkbox"/>	<input type="checkbox"/>	<input type="checkbox"/>	<input type="checkbox"/>
RAL 9005	<input type="checkbox"/>	<input type="checkbox"/>	<input type="checkbox"/>	<input type="checkbox"/>	<input type="checkbox"/>
Brass, nickelplated	<input type="checkbox"/>	<input type="checkbox"/>	<input type="checkbox"/>	<input type="checkbox"/>	<input type="checkbox"/>

Sample Additional information material Personal product consultation

Company

Last name, first name

Street, postal code, city

Phone

Fax

E-mail

Message

RST Rabe-System-Technik und Vertriebs-GmbH
Otto-Lilienthal-Strasse 19
49134 Wallenhorst
GERMANY

 +49 5407 8766-0

 +49 5407 8766-99

 info@rst.eu

 www.rst.eu

