



# Euro-Top FrontFix Messing / Euro-Top FrontFix Brass

<b>Material</b>	Messing, vernickelt
<b>Dichteinsatz</b>	Chloropren
<b>Flachdichtung</b>	Chloropren
<b>Einsatz-temperaturen</b>	-20°C bis +100°C kurzzeitig -30°C bis +150°C
<b>Schutzart</b>	IP66 / IP68
<b>Hinweis</b>	Schnellmontageverschraubung, montierbar in metrischen Durchgangsbohrungen

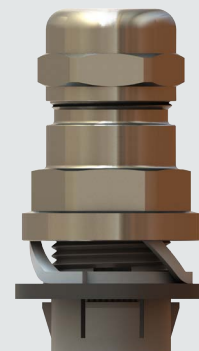
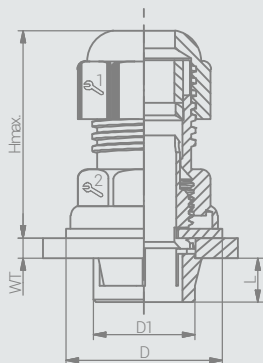
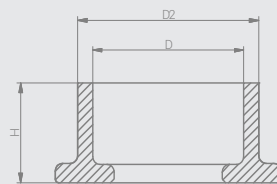
<b>Material</b>	Nickel Plated Brass
<b>Sealing</b>	Chloroprene
<b>Flat Sealing</b>	Chloroprene
<b>Operating Temperatures</b>	-20°C to +100°C intermittent -30°C to +150°C
<b>Protection class</b>	IP66 / IP68
<b>Note</b>	quick fitting gland mountable in metric clearance hole

Zulassungen / Approvals:

Artikel Article	Größe Size	Klemmbereich Clamping Range		Gehäusewandstärke Enclosure Wall Thickness (WT)		1/2	L	D	D1	H max.	VPE PU
		≥	≤	≥	≤						
FRONTFIX6016R	M 16	3.0	7.0	0.5	4	20/20	9	28.3	16.0	45.0	100
FRONTFIX6016	M 16	5.0	10.0	0.5	4	20/20	9	28.3	16.0	45.0	100
FRONTFIX6020R	M 20	5.0	9.0	0.5	4	22/22	9	32.3	20.0	44.0	50
FRONTFIX6020	M 20	6.0	12.0	0.5	4	22/22	9	32.3	20.0	44.0	50
FRONTFIX6025R	M 25	8.0	13.0	0.5	4	27/27	9	38.5	25.0	46.0	25
FRONTFIX6025	M 25	11.0	17.0	0.5	4	27/27	9	38.5	25.0	46.0	25
FRONTFIX6032R	M 32	11.0	15.0	0.5	4	34/34	9	45.5	32.0	54.0	20
FRONTFIX6032	M 32	15.0	21.0	0.5	4	34/34	9	45.5	32.0	54.0	20
FRONTFIX6040R	M 40	16.0	23.0	0.5	4	43/43	9	58.0	40.0	60.0	10
FRONTFIX6040	M 40	19.0	28.0	0.5	4	43/43	9	58.0	40.0	60.0	10

## Demontagewerkzeug / Disassembling Tool

Artikel Article	Größe Size	D	D2	H
FRONTFIXDAT16	16	16.0	20.0	13.0
FRONTFIXDAT20	20	20.0	24.0	13.0
FRONTFIXDAT25	25	25.0	29.0	13.0
FRONTFIXDAT32	32	32.0	36.0	13.0
FRONTFIXDAT40	40	40.0	44.0	15.5



Industrie  
Industrial

EMV  
EMC

Druckausgleich  
Pressure Balance

Explosionsschutz  
Explosion Proof

Zubehör  
Accessories

Technischer Anhang  
Technical Appendix